

# 2019 PRODUCT

Photo Accessories

THE BEST POWER SOLUTION



## About Nitecore

Since its inception in 2007, Nitecore has long been on top of the hierarchy in the LED lighting and battery charger markets backed by the tremendous innovation competences it masters. Nitecore's products are some of the most sought after in America, Europe, Middle East and Oceania totaling over 100 countries.

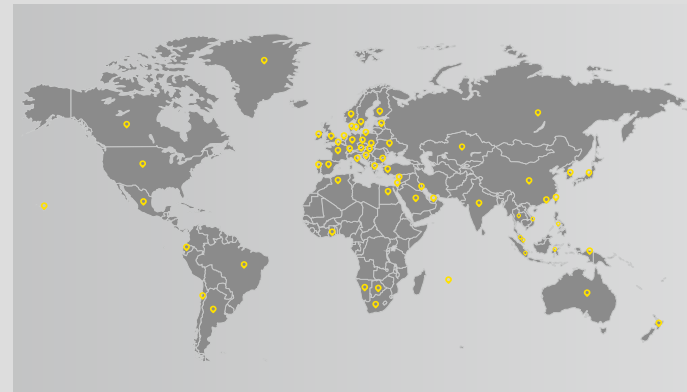


Nitecore has a R&D team commanding excellent critical thinking competency and ideas generation, which forms the backbone of the company that has harvested various invention patents and has become the first brand in the professional lighting and illumination industry to receive all four grand international design prizes including the American IDEA, the German iF Design Award, Red Dot Design Award and the Japanese G-Mark (Good Design), in addition to the worldly famous ISPO Award in the outdoor industry.

## R&D



Nitecore operates in full compliance with the ISO9001 guidelines, with the most exacting factory quality control standards. Products marketed under the brand are all CE, RoHS, FCC, CEC, REACH, KC, C-TICK approved by an accredited certification body, ensuring the provision of effective solutions.



## Global Presence

NITECORE Sales and Marketing Departments are responsible for promoting Nitecore brand and its products to the global market.

Nitecore now has operations in more than 100 countries and regions around the world. We supply the best gear to users from different fields, including photographic lighting, outdoor sports, military and law enforcement etc.





• **INTELLIGENT LCD DISPLAY**

real-time feeds on overall charging status



- Battery Status
- Charged Volume
- Charging Current
- Charging Temperature & Battery Voltage
- Battery Level

• **PORTABLE USB ADAPTOR**

easily copes with situations where AC input is not possible



• **DUAL SLOT**

specifically designed for enthusiasts, tending to the needs of both the primary and backup cameras







**Smart charging management system**

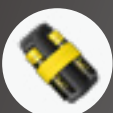
**Made from durable PC+ABS(VO) fire retardant materials**



USB adaptor



portable power bank



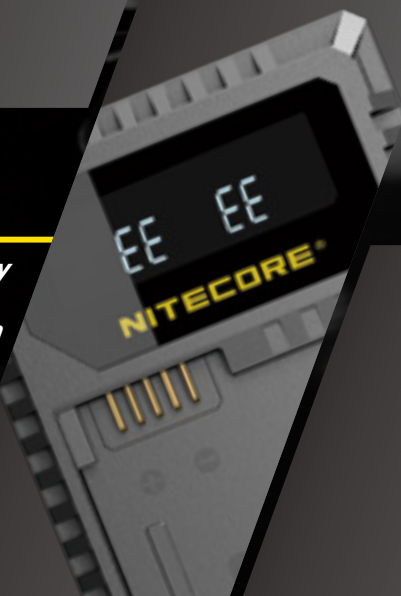
Nitecore F2 flexible power bank



solar panel

**Compatible with multiple input sources**

**Reverse polarity and anti short circuit protection**



**Output current faster than the original charger**



**Compact and highly portable, easy to carry outdoors**



SONY

SONY

NITECORE®

NEW PRODUCT



USB Charger For SONY

\* SONY is a registered trademark of SONY,INC.

USN3 PRO 2 BATTERY SLOTS

Compatible with SONY's NP-FM500H/NP-F730/  
NP-F750/NP-F770/NP-F970/NP-F550

- Input:**  
DC 5V/2A or 9V/2A
- Output voltage:**  
Slot 1 8.4V ± 1%  
Slot 2 8.4V ± 1%
- Output Current:**  
QC Mode: 1200mA\*1(MAX), 800mA\*2(MAX)  
Standard Mode: 1000mA\*1(MAX)



USB Charger For SONY

\* SONY is a registered trademark of SONY,INC.

USN1 2 BATTERY SLOTS

Compatible with SONY's NP-FW50

- Input:**  
DC 5V/2A
- Output voltage:**  
Slot 1 8.4V ± 1%  
Slot 2 8.4V ± 1%
- Output Current:**  
1000mA(MAX)

- |  |                             |  |                                      |   |  |                  |
|--|-----------------------------|--|--------------------------------------|---|--|------------------|
| <b>NP-FM500H</b><br>α99 II α99<br>α77 II α68 | <b>NP-F730</b><br>CCD-TRV98 | <b>NP-F750</b><br>NEX-FS700<br>HXR-NX5N<br>HXR-NX100<br>HDR-AX2000E<br>FDR-AX1 | <b>NP-F770</b><br>HXR-NX3<br>HXR-NX5 | <b>NP-F970</b><br>NEX-FS700<br>NEX-FS100J<br>PXW-Z100<br>HVR-HD1000E<br>HDR-AX2000E | <b>NP-F550</b><br>UPX-2000<br>MVC-FD97<br>MVC-FDR1 | Compatible With: |
|--|-----------------------------|--|--------------------------------------|---|--|------------------|

- |                |                  |            |             |                |                   |             |               |               |
|----------------|------------------|------------|-------------|----------------|-------------------|-------------|---------------|---------------|
| <b>NP-FW50</b> | Compatible With: | Sony α5000 | Sony α6100  | Sony α7        | Sony α7R II       | Sony α7R II | Sony ILCE-QX1 | Sony DSC-RX10 |
| Sony α5100     | Sony α6300       | Sony α7 II | Sony α7S    | Sony ILCE-QX1L | Sony DSC-RX10 II  |             |               |               |
| Sony α6000     | Sony α6500       | Sony α7R   | Sony α7S II |                | Sony DSC-RX10 III |             |               |               |
|                |                  |            |             |                | Sony DSC-RX10 IV  |             |               |               |



USB Charger For SONY

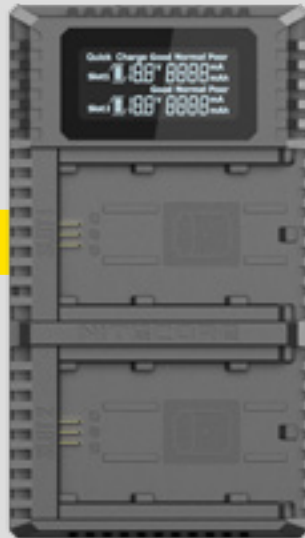
\* SONY is a registered trademark of SONY,INC.

USN4 PRO 2 BATTERY SLOTS

Compatible with SONY's NP-FZ100

- Input:**  
DC 5V/2A or 9V/2A
- Output voltage:**  
Slot 1 8.4V ± 1%  
Slot 2 8.4V ± 1%
- Output Current:**  
QC Mode: 1200mA\*1(MAX), 800mA\*2(MAX)  
Standard Mode: 1000mA\*1(MAX)

NEW PRODUCT



USB Charger For SONY

\* SONY is a registered trademark of SONY,INC.

USN2 2 BATTERY SLOTS

Compatible with SONY's NP-BX1

- Input:**  
DC 5V/2A
- Output voltage:**  
Slot 1 4.2V ± 1%  
Slot 2 4.2V ± 1%
- Output Current:**  
600mA\*2(MAX)



- |                 |                  |             |              |             |                  |
|-----------------|------------------|-------------|--------------|-------------|------------------|
| <b>NP-FZ100</b> | Compatible With: | SONY α7 III | SONY α7R III | SONY α7R IV | SONY α9 (ILCE-9) |
|                 |                  | SONY α6600  |              |             |                  |

- |               |                  |             |             |            |                              |            |            |
|---------------|------------------|-------------|-------------|------------|------------------------------|------------|------------|
| <b>NP-BX1</b> | Compatible With: | DSC-HX350   | DSC-RX100M4 | DSC-RX100  | DSC-HX50                     | HDR-AS200V | HDR-GWP88E |
| DSC-H400      | DSC-WX500        | DSC-RX100M2 | DSC-HX300   | FDR-X1000V | HDR-CX240E                   |            |            |
| DSC-HX400     | DSC-HX90         | DSC-RX100M3 | HDR-A300R   | HDR-CX405  | HDR-PJ240E                   |            |            |
| DSC-RX100M5   | DSC-WX350        | DSC-RX1     | FDR-X3000   | HDR-PJ410  | (and more compatible models) |            |            |
| DSC-RX1RM2    | DSC-HX60         | DSC-RX1R    | HDR-AS50    | HDR-MV1    |                              |            |            |



**USB Charger For Canon**

\* Canon is a registered trademark of Canon,INC.

**UCN4 PRO 2 BATTERY SLOTS**

Compatible with LP-E4/LP-E4N

**Input:**

DC 5V/2A or 9V/2A

**Output voltage:**

Slot 1 12.6V ± 1%

Slot 2 12.6V ± 1%

**Output Current:**

QC Mode: 1000mA\*1 (MAX), 600mA\*2 (MAX)

Standard Mode: 500mA\*1 (MAX)



**USB Charger For Canon**

\* Canon is a registered trademark of Canon,INC.

**UCN3 2 BATTERY SLOTS**

Compatible with CANON's LP-E6N

**Input:**

DC 5V/2A

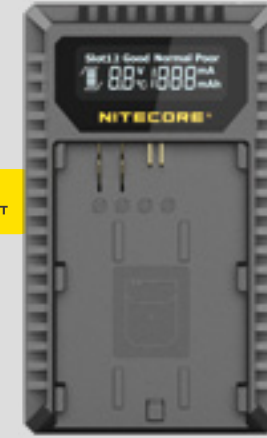
**Output voltage:**

Slot 1 8.2V ± 1%

Slot 2 8.2V ± 1%

**Output Current:**

1000mA(MAX)



**LP-E4/LP-E4N** Compatible With:

- EOS-1D X
- EOS-1D Mark IV
- EOS-1Ds
- EOS-1D Mark III
- EOS-Mark III

**LP-E6N** Compatible With:

- Canon 6D Mark II
- Canon 5Ds R
- Canon 60D
- Canon5D Mark IV
- Canon 70D
- Canon 90D
- Canon 80D
- Canon 6D
- Canon 7D
- Canon 5Ds
- Canon 5D Mark III
- Canon 7D Mark II



**USB Charger For Canon**

\* Canon is a registered trademark of Canon,INC.

**UCN2 PRO 2 BATTERY SLOTS**

Compatible with CANON's LP-E6N

**Input:**

DC 5V/2A or 9V/2A

**Output voltage:**

Slot 1 8.4V ± 1%

Slot 2 8.4V ± 1%

**Output Current:**

QC Mode:1200mA\*1(MAX), 800mA\*2(MAX)

Standard Mode: 1000mA\*1(MAX)



**USB Charger For Canon**

\* Canon is a registered trademark of Canon,INC.

**UCN1 2 BATTERY SLOTS**

Compatible with CANON's LP-E6 / LP-E6N LP-E8

**Input:**

DC 5V/2A

**Output voltage:**

Slot 1 (LP-E6/LP-E6N)8.4V

Slot 2 (LP-E8)8.4V

**Output Current:**

1000mA(MAX)



**LP-E6N** Compatible With:

- Canon EOS 6D Mark II
- Canon EOS 70D
- Canon EOS 5D Mark IV
- Canon EOS 6D
- Canon EOS 80D
- Canon EOS 5D Mark III
- Canon EOS 5Ds
- Canon EOS 60D
- Canon EOS 5Ds R
- Canon EOS 90D
- Canon EOS 7D
- Canon EOS 7D Mark II
- Canon EOS R

**LP-E6/LP-E6N** Compatible With:

- Canon EOS 5D Mark II
- Canon EOS 5Ds
- Canon EOS 7D Mark II
- Canon EOS 5D Mark III
- Canon EOS 5Ds R
- Canon EOS 60D
- Canon EOS 5D Mark IV
- Canon EOS 6D
- Canon EOS 60Da
- Canon XC10
- Canon EOS 7D
- Canon EOS 70D
- Canon EOS 90D

**LP-E8** Compatible With:

- Canon EOS Rebel T2i
- Canon EOS Rebel T5i
- Canon EOS 650D
- Canon EOS Rebel T3i
- Canon EOS 550D
- Canon EOS 700D
- Canon EOS Rebel T4i
- Canon EOS 600D
- Canon EOS Kiss X4
- Canon EOS Kiss X5
- Canon EOS Kiss X6

Nikon



### USB Charger For Nikon

\* Nikon is a registered trademark of Nikon,INC.

## UNK2 2 BATTERY SLOTS

Compatible with Nikon's EN-EL15

#### Input:

DC 5V/2A

#### Output voltage:

Slot 1 8.4V ± 1%

Slot 2 8.4V ± 1%

#### Output Current:

1000mA(MAX)

Fujifilm



### USB Charger For Fujifilm

\* Fujifilm is a registered trademark of Fujifilm,INC.

## FX2 PRO 2 BATTERY SLOTS

Compatible with Fujifilm's NP-T125

#### Input:

DC 5V/2A or 9V/2A

#### Output voltage:

Slot 1 12.6V ± 1%

Slot 2 12.6V ± 1%

#### Output Current:

QC Mode: 800mA\*1(MAX), 600mA\*2(MAX)

Standard Mode: 500mA\*1(MAX)



### EN-EL15 Compatible With:

|             |             |             |             |            |
|-------------|-------------|-------------|-------------|------------|
| Nikon D500  | Nikon D600  | Nikon D610  | Nikon D750  | Nikon D800 |
| Nikon D810  | Nikon D810A | Nikon D850  | Nikon D7000 | Nikon 1V1  |
| Nikon D7200 | Nikon D7500 | Nikon D800E | Nikon D7100 | Nikon V1   |

### NP-T125 Compatible With:

|                  |
|------------------|
| Fujifilm GFX 50S |
| Fujifilm GFX 50R |
| Fujifilm GFX 100 |



### USB Charger For Nikon

\* Nikon is a registered trademark of Nikon,INC.

## UNK1 2 BATTERY SLOTS

Compatible with Nikon's EN-EL15/EN-EL14 / EN-EL14a

#### Input:

DC 5V/2A

#### Output voltage:

Slot 1 (EN-EL15) 8.4V ± 1%

Slot 2 (EN-EL14/ EN-EL14a) 8.4V ± 1%

#### Output Current:

1000mA(MAX)



### USB Charger For Fujifilm

\* Fujifilm is a registered trademark of Fujifilm,INC.

## FX1 2 BATTERY SLOTS

Compatible with FUJIFILM's NP-W126/ NP-W126S

#### Input:

DC 5V/2A

#### Output voltage:

Slot 1 8.4V ± 1%

Slot 2 8.4V ± 1%

#### Output Current:

1000mA(MAX)



### EN-EL15 Compatible With:

|            |             |             |             |
|------------|-------------|-------------|-------------|
| Nikon D600 | Nikon D800  | Nikon D850  | Nikon D7500 |
| Nikon D600 | Nikon D800E | Nikon D7000 | Nikon 1 V1  |
| Nikon D610 | Nikon D810  | Nikon D7100 | Nikon V1    |
| Nikon D750 | Nikon D810A | Nikon D7200 |             |

### EN-EL14A : /EN-EL14 Compatible With:

|             |             |                     |                     |
|-------------|-------------|---------------------|---------------------|
| Nikon D5500 | Nikon D5100 | Nikon D3400         | Nikon Coolpix P7700 |
| Nikon D5300 | Nikon D3100 | Nikon Df            | Nikon Coolpix P7800 |
| Nikon D5200 | Nikon D3200 | Nikon Coolpix P7100 |                     |
| Nikon D5600 | Nikon D3300 | Nikon Coolpix P7000 |                     |

### NP-W126/NP-W126S Compatible With:

|                 |               |                |               |                |                |                |
|-----------------|---------------|----------------|---------------|----------------|----------------|----------------|
| Fujifilm X-Pro1 | Fujifilm X-A1 | Fujifilm X-A5  | Fujifilm X-H1 | Fujifilm X-T1  | Fujifilm X-T20 | Fujifilm X-E2S |
| Fujifilm X-Pro2 | Fujifilm X-A2 | Fujifilm X-A10 | Fujifilm HS30 | Fujifilm X-T2  | Fujifilm X-E1  | Fujifilm X-E3  |
| Fujifilm X100F  | Fujifilm X-A3 | Fujifilm X-A20 | Fujifilm X-M1 | Fujifilm X-T10 | Fujifilm X-E2  |                |



Hasselblad



Leica

NITECORE®



### USB Charger For Leica

\* Leica is a registered trademark of Leica,INC.

## ULM10 PRO 2 BATTERY SLOTS

Compatible with Leica's BP-SCL5

#### Input:

DC 5V/2A or 9V/2A

#### Output voltage:

Slot 1 8.25V ± 1%

Slot 2 8.25V ± 1%

#### Output Current:

QC Mode: 1200mA\*1(MAX), 800mA\*2(MAX)

Standard Mode: 700mA\*1(MAX)



**BP-SCL5** Compatible With:

Leica M10



### USB Charger For Hasselblad

\* Hasselblad is a registered trademark of Hasselblad,INC.



## UHX1 PRO 2 BATTERY SLOTS

Compatible with Hasselblad's VHBI

#### Input:

DC 5V/2A or 9V/2A

#### Output voltage:

Slot 1 8.4V ± 1%

Slot 2 8.4V ± 1%

#### Output Current:

QC Mode: 1200mA\*1 (MAX), 800mA\*2 (MAX)

Standard Mode: 500mA\*1 (MAX)



**VHBI** Compatible With:

Hasselblad X1D-50C  
Hasselblad X1D II 50C



### USB Charger For Leica

\* Leica is a registered trademark of Leica,INC.

## UL109 2 BATTERY SLOTS

Compatible with Leica's BP-DC15-E

#### Input:

DC 5V/2A

#### Output voltage:

Slot 1 8.4V ± 1%

Slot 2 8.4V ± 1%

#### Output Current:

1000mA(MAX)



**BP-DC15-E** Compatible With:

Leica D-lux typ109  
Leica D-Lux 7

Leica



### USB Charger For Leica

\* Leica is a registered trademark of Leica,INC.

## ULSL 1 BATTERY SLOT

Compatible with Leica's BP-SCL4

#### Input:

DC 5V/2A

#### Output voltage:

8.4V ± 1%

#### Output Current:

1000mA(MAX)

### BP-SCL4

Leica SL Typ601

Leica



### USB Charger For Leica

\* Leica is a registered trademark of Leica,INC.

## ULM240 1 BATTERY SLOT

Compatible with Leica's BP-SCL2

#### Input:

DC 5V/2A

#### Output voltage:

8.2V ± 1%

#### Output Current:

1000mA(MAX)

### BP-SCL2

Compatible With:

Leica M(Typ262)

Leica M(Typ240)

Leica M240P

Leica M(Typ246)

Leica M-P



### USB Charger For Leica

\* Leica is a registered trademark of Leica,INC.

## ULQ 1 BATTERY SLOT

Compatible with Leica's BP-DC12

#### Input:

DC 5V/2A

#### Output voltage:

8.4V ± 1%

#### Output Current:

1000mA(MAX)



### USB Charger For Leica

\* Leica is a registered trademark of Leica,INC.

## ULM9 1 BATTERY SLOT

Compatible with Leica's BLI-312

#### Input:

DC 5V/1A

#### Output voltage:

4.2V ± 1%

#### Output Current:

1000mA(MAX)



### BP-DC12

Compatible With:

Leica Q(Typ116)

Leica V-LUX 4

Leica V-LUX(Typ114)

Leica CL

### BLI-312

Compatible With:

Leica BM8

Leica M8.2

Leica M9-P

Leica M8

Leica M9

Leica M-E

NITECORE®



NLGP4  
Li-ion battery

## UGP4 2 BATTERY SLOTS

Compatible with GoPro's AHDBT-401 / 301 / 201

|                                      |
|--------------------------------------|
| <b>Input:</b>                        |
| USB DC 5V                            |
| <b>Output voltage:</b>               |
| 4.2V ± 1% / 4.35V ± 1% / 5V          |
| <b>Output Current:</b>               |
| 800mA x 2 (MAX), USB 1500mA x 1(MAX) |

AHDBT-401/302/301/201 Compatible With:

GoPro Hero 3/4



## LC10 PORTABLE MAGNETIC OUTDOOR USB CHARGER

Compatible with Li-ion / IMR

|                                     |
|-------------------------------------|
| <b>Input:</b>                       |
| DC 5V >0.5A                         |
| <b>Output:</b>                      |
| 4.2V ± 1% (BATTERY) / 5V ± 5% (USB) |
| 1A MAX                              |
| <b>Dimensions</b>                   |
| 9.65" x 0.96" x 0.73"               |
| <b>Weight</b>                       |
| 0.98oz                              |



Li-ion / IMR Compatible With:

|       |       |       |                |       |       |       |       |       |       |
|-------|-------|-------|----------------|-------|-------|-------|-------|-------|-------|
| 12650 | 13650 | 14500 | 16340 (RCR123) | 17500 | 17700 | 18500 | 20700 | 22650 | 26500 |
| 13450 | 14350 | 14650 | 16650          | 17650 | 18350 | 18650 | 21700 | 22700 | 26650 |
| 13500 | 14430 | 16500 | 17350          | 17670 | 18490 | 18700 | 22500 | 25500 | 26700 |

(Compatible with 3.6V or 3.7V cylinder rechargeable Li-ion battery)

## UGP5 2 BATTERY SLOTS

Compatible with GoPro's HER05 Black Battery

|                        |
|------------------------|
| <b>Input:</b>          |
| USB DC 5V > 0.5A       |
| <b>Output voltage:</b> |
| 4.35V ± 1%             |
| <b>Output Current:</b> |
| 750mA x 2 MAX          |



HER05 Black Battery Compatible With:

GoPro Hero 5/6



ACTION CAMERA LIGHT



## GP3

**360** Lumens

Runtime on lowest output level: 235h

Beam distance: 105m

CREE XP-B2 LED

2.28" x 1" x 3.38"

(57.5mm x 25.4mm x 85.8mm)



NEW PRODUCT

## UM2 2 BATTERY SLOTS

Compatible with Li-ion / IMR, Ni-MH, Ni-Cd, LiFePO4

|   |
|---|
| <b>Input:</b>                                   |
| DC 5V/2A 9V/2A 18W (MAX)                        |
| <b>Output voltage:</b>                          |
| 4.35V ± 1% / 4.2V ± 1% / 3.7V ± 1% / 1.48V ± 1% |
| <b>Output Current:</b>                          |
| QC Mode: 1,500mA*2 (MAX)                        |
| Standard Mode: 1,000mA*2 (MAX)                  |
| <b>Dimensions</b>                               |
| 5.98" × 2.87" × 1.57"                           |
| <b>Weight</b>                                   |
| 5.23oz  |



NEW PRODUCT

## UMS2 2 BATTERY SLOTS

Compatible with Li-ion / IMR, Ni-MH, Ni-Cd, LiFePO4

|   |
|---|
| <b>Input:</b>                                   |
| DC 5V/2A 9V/2A 18W (MAX)                        |
| <b>Output voltage:</b>                          |
| 4.35V ± 1% / 4.2V ± 1% / 3.7V ± 1% / 1.48V ± 1% |
| <b>Output Current:</b>                          |
| QC Mode: 3,000mA*1 (MAX) 2,000mA*2 (MAX)        |
| Standard Mode: 2,000mA*1 (MAX) 1,000mA*2 (MAX)  |
| <b>Dimensions</b>                               |
| 5.98" × 2.87" × 1.57"                           |
| <b>Weight</b>                                   |
| 5.56oz  |

**Li-ion / IMR / LiFePO4** Compatible With:

|       |       |       |       |       |       |
|-------|-------|-------|-------|-------|-------|
| 10440 | 16340 | 17650 | 18490 | 20700 | 25500 |
| 14500 | 16650 | 17670 | 18500 | 21700 | 26500 |
| 14650 | 17350 | 17700 | 18650 | 22500 | 26650 |
| 16500 | 17500 | 18350 | 18700 | 22650 | 26700 |

**Ni-MH/Ni-Cd:** Compatible With:

AA, AAA, AAAA, C, D

**Li-ion / IMR / LiFePO4** Compatible With:

|       |       |       |       |       |       |
|-------|-------|-------|-------|-------|-------|
| 10440 | 16340 | 17650 | 18490 | 20700 | 25500 |
| 14500 | 16650 | 17670 | 18500 | 21700 | 26500 |
| 14650 | 17350 | 17700 | 18650 | 22500 | 26650 |
| 16500 | 17500 | 18350 | 18700 | 22650 | 26700 |

**Ni-MH (NiCd):** Compatible With:

AA, AAA, AAAA, C, D

## UM4 4 BATTERY SLOTS

Compatible with Li-ion / IMR, Ni-MH, Ni-Cd, LiFePO4

NEW PRODUCT



|  |
|--|
| <b>Input:</b>  |
| DC 5V/2A 9V/2A 18W (MAX)                                       |
| <b>Output voltage:</b>   |
| 4.35V ± 1% / 4.2V ± 1% / 3.7V ± 1% / 1.48V ± 1%                |
| <b>Output Current:</b>   |
| QC Mode: 1,500mA*1 (MAX), 1,500mA*2 (MAX), 750mA*4 (MAX)       |
| Standard Mode: 1,500mA*1 (MAX), 1,000mA*2 (MAX), 500mA*4 (MAX) |
| <b>Dimensions</b>  |
| 6.26" × 4.21" × 1.61"  |
| <b>Weight</b>  |
| 8.21oz   |

**Li-ion/IMR/LiFePO4** Compatible With:

|       |       |       |       |       |       |
|-------|-------|-------|-------|-------|-------|
| 10440 | 16340 | 17650 | 18490 | 20700 | 25500 |
| 14500 | 16650 | 17670 | 18500 | 21700 | 26500 |
| 14650 | 17350 | 17700 | 18650 | 22500 | 26650 |
| 16500 | 17500 | 18350 | 18700 | 22650 | 26700 |

**Ni-MH (NiCd):** Compatible With:

AA, AAA, AAAA, C, D

## UMS4 4 BATTERY SLOTS

Compatible with Li-ion / IMR, Ni-MH, Ni-Cd, LiFePO4

NEW PRODUCT



|  |
|--|
| <b>Input:</b>  |
| DC 5V/2A 12V/1.5A 18W (MAX)                                  |
| <b>Output voltage:</b>                                       |
| 4.35V ± 1% / 4.2V ± 1% / 3.7V ± 1% / 1.48V ± 1%              |
| <b>Output Current:</b>                                       |
| QC Mode: 3,000mA*1 (MAX) 2,000mA*2 (MAX) 1,000mA*4 (MAX)     |
| Standard Mode: 2,000mA*1 (MAX) 1,000mA*2 (MAX) 500mA*4 (MAX) |
| <b>Dimensions</b>  |
| 6.26" × 4.21" × 1.61"  |
| <b>Weight</b>  |
| 9.01oz   |

**Li-ion/IMR/LiFePO4** Compatible With:

|       |       |       |       |       |       |
|-------|-------|-------|-------|-------|-------|
| 10440 | 16340 | 17650 | 18490 | 20700 | 25500 |
| 14500 | 16650 | 17670 | 18500 | 21700 | 26500 |
| 14650 | 17350 | 17700 | 18650 | 22500 | 26650 |
| 16500 | 17500 | 18350 | 18700 | 22650 | 26700 |

**Ni-MH (NiCd):** Compatible With:

AA, AAA, AAAA, C, D





## D4 4 BATTERY SLOTS

Compatible with Li-ion / IMR, Ni-MH, Ni-Cd, LiFePO4

|   |
|---|
| <b>Input:</b>                             |
| AC 100-240V 50/60Hz 0.35A(MAX), DC 12V 1A |
| <b>Output voltage:</b>                    |
| 4.2V ± 1% / 3.7V ± 1% / 1.48V ± 1%        |
| <b>Output Current:</b>                    |
| 375mA × 4 / 750mA × 2                     |
| <b>Dimensions</b>                         |
| 5.63" × 3.90" × 1.42"                     |
| <b>Weight</b>                             |
| 8.43oz                                    |



## i8 8 BATTERY SLOTS

Compatible with Li-ion / IMR, Ni-MH, Ni-Cd

|  |
|--|
| <b>Input:</b>                                  |
| AC 100~240V 50/60Hz 0.6A(MAX) 30W<br>DC 12V 3A |
| <b>Output voltage:</b>                         |
| Battery: 4.2V ± 1% / 1.48V ± 1% / USB: 5V ± 5% |
| <b>Output Current:</b>                         |
| 1.5A MAX / 500mA MIN / USB: 5V*2.1A            |
| <b>Dimensions</b>                              |
| 4.61" × 3.98" × 5.30"                          |
| <b>Weight</b>                                  |
| 17.22oz  |



**Li-ion / IMR / LiFePO4** Compatible With:

26650 17670 17500 10440  
22650 18490 14500  
18650 18350 16340 (RCR123)

**Ni-MH/Ni-Cd:** Compatible With:

AA, AAA, AAAA, C

**Li-ion/IMR** Compatible With:

10340 10500 12650 13650 14500 16340 17500 18350 18650 25500  
10350 12340 13450 14350 14650 16650 17650 18490 22500 26500  
10440 12500 13500 14430 16500 17350 17670 18500 22650 26650  
Unprotected batteries: 18700 20700 21700

**Ni-MH (NiCd):**

Compatible With:  
AA, AAA, AAAA, C, D

## SC4 4 BATTERY SLOTS

**3A**  
SPEEDY CHARGE

Compatible with Li-ion / IMRLiFePO4 / Ni-MH ( NiCd )

|  |
|--|
| <b>Input:</b>  |
| AC 100~240V 50/60Hz 1A(MAX) 40W<br>DC 12V 3A                             |
| <b>Output voltage:</b>   |
| Battery: 4.35V ± 1% / 4.2V ± 1% / 3.7V ± 1% / 1.48V ± 1%<br>USB: 5V ± 5% |
| <b>Output Current:</b>   |
| 3A x 2 MAX / 1.5A x 4 / 2.1A MAX   |
| <b>Dimensions</b>  |
| 6.51" × 4.33" × 1.77"  |
| <b>Weight</b>  |
| 13.59oz  |



## NEW i4 4 BATTERY SLOTS

Compatible with Li-ion / IMR / Ni-MH / Ni-Cd / LiFePO4

|  |
|--|
| <b>Input:</b>                                      |
| AC 100~240V 50/60Hz 250mA(max) 10W;<br>DC 9~12V 1A |
| <b>Output voltage:</b>                             |
| 4.35V ± 1% / 4.2V ± 1% / 3.7V ± 1% / 1.48V ± 1%    |
| <b>Output Current:</b>                             |
| 1500mA x 1 / 750mA x 2 / 500mA x 2 / 375mA x 4     |
| <b>Dimensions</b>                                  |
| 5.51" × 3.73" × 1.45"                              |
| <b>Weight</b>                                      |
| 7.12oz   |



**Li-ion/IMR/LiFePO4** Compatible With:

10340 10500 12650 13650 14500 16340 17500 18350 18650 25500  
10350 12340 13450 14350 14650 16650 17650 18490 22500 26500  
10440 12500 13500 14430 16500 17350 17670 18500 22650 26650  
Unprotected batteries: 18700 20700 21700

**Ni-MH (NiCd):**

Compatible With:  
AA, AAA, AAAA, C, D

**Li-ion/IMR/LiFePO4** Compatible With:

10340 10500 12650 13650 14500 16340 17500 18350 18650 25500  
10350 12340 13450 14350 14650 16650 17650 18490 22500 26500  
10440 12500 13500 14430 16500 17350 17670 18500 22650 26650  
Unprotected batteries: 18700 20700 21700

**Ni-MH (NiCd):**

Compatible With:  
AA, AAA, AAAA, C, D

FLEXIBLE POWER BANK SERIES



**F1** 1 BATTERY SLOT

Compatible with Li-ion / IMR

|                                  |
|----------------------------------|
| <b>Input:</b>                    |
| DC 5V, >500mA                    |
| <b>Output voltage:</b>           |
| 4.2V ± 1% (slot) / 5V ± 5% (USB) |
| <b>Output Current:</b>           |
| 1000mA MAX (slot) / 1000mA (USB) |
| <b>Dimensions</b>                |
| 3.43" × 0.94" × 1.15"            |
| <b>Weight</b>                    |
| 1.07oz                           |

Up to 1000mA fast charging through Micro-USB input port



**F2** 2 BATTERY SLOTS

Compatible with Li-ion / IMR



FLEXIBLE POWER BANK SERIES



|                                  |
|----------------------------------|
| <b>Input:</b>                    |
| DC:5V, >0.5A(USB)                |
| <b>Output voltage:</b>           |
| 4.2V ± 1% (slot) / 5V ± 5% (USB) |
| <b>Output Current:</b>           |
| USB 2A MAX Battery: 2 × 1A MAX   |
| <b>Dimensions</b>                |
| 3.7" × 1.73" × 0.98"             |
| <b>Weight</b>                    |
| 1.64oz                           |

**F1 & F2 Li-ion / IMR:** Compatible With:

|       |       |               |
|-------|-------|---------------|
| 26650 | 18490 | 16340(RCR123) |
| 18650 | 17500 | 14500         |
| 17670 | 17335 | 10440         |



| MODEL   | SPECIFICATION | CAPACITY |
|---------|---------------|----------|
| NL1826R | 18650         | 2600mAh  |



| MODEL   | SPECIFICATION | CAPACITY |
|---------|---------------|----------|
| NL1834R | 18650         | 3400mAh  |



| MODEL    | SPECIFICATION | CAPACITY |
|----------|---------------|----------|
| NL1835HP | 18650         | 3500mAh  |

Protected Li-ion Battery



| MODEL  | SPECIFICATION | CAPACITY |
|--------|---------------|----------|
| NL1823 | 18650         | 2300mAh  |



| MODEL  | SPECIFICATION | CAPACITY |
|--------|---------------|----------|
| NL1826 | 18650         | 2600mAh  |



| MODEL  | SPECIFICATION | CAPACITY |
|--------|---------------|----------|
| NL1832 | 18650         | 3200mAh  |



| MODEL  | SPECIFICATION | CAPACITY |
|--------|---------------|----------|
| NL1834 | 18650         | 3400mAh  |



| MODEL  | SPECIFICATION | CAPACITY |
|--------|---------------|----------|
| NL1835 | 18650         | 3500mAh  |



## Waterproof Power Banks



### NPB1

#### NPB1 SPEC

**Input:**

5V/2A

**Output:**

5V/2.1A, 9V/1.5A

**Max Output Power**

13W

**Supported Protocols**

QC2.0/QC3.0/FCP/BC1.2/DCP/yd/  
t1591-2009

**Capacity**

5000mAh

#### NPB2 SPEC

**Input:**

5V/2A 9V/2A

**Output:**

5V/2.1A, 9V/2A, 12V/1.5A

**Max Output Power**

18W

**Supported Protocols**

QC2.0/QC3.0/FCP/BC1.2/DCP/yd/  
t1591-2009

**Capacity**

10000mAh



### NPB2

#### NPB4 SPEC

**Input:**

5V/2A 9V/2A

**Output:**

5V/2.1A\*2, 9V/2A\*2, 12V/1.5A\*2

**Max Output Power**

36W

**Supported Protocols**

QC2.0/QC3.0/FCP/BC1.2/DCP/yd/  
t1591-2009

**Capacity**

20000mAh



### NPB4



## USB Charging Stations



### UA42Q

#### UA42Q SPEC

**Input:**

AC 100-240V

**Output:**

5V/2.1A\*2, 9V/2A\*2, 12V/1.5A\*2

**Max Output Power**

36W

**Supported Protocols**

QC2.0/QC3.0/FCP/BC1.2/DCP/yd/  
t1591-2009

#### UA55 SPEC

**Input:**

AC 100-240V

**Output:**

5V/2.1A\*5

**Max Output Power**

50W

**Supported Protocols**

BC1.2/DCP/yd/t1591-2009



### UA55



### UA66Q

#### UA66Q SPEC

**Input:**

AC 100-240V

**Output:**

5V/2.1A\*6, 9V/2A, 12V/1.5A

**Max Output Power**

68W

**Supported Protocols**

QC2.0/QC3.0/FCP/BC1.2/DCP/yd/  
t1591-2009



## Power Stations

### NPS200 SPEC

#### Capacity

216WH(10.8V, 20AH)

#### Equivalent Capacity

60AH@3.6V

#### USB Output

5V/2.1A, 9V/2A, 12V/1.5A

#### PD Output

5V~20V/2.25A

#### 12V Vehicle Output

12V/10A

#### 220V AC Inverter Output (Sine Wave)

220V AC 50HZ,0.75A(150W)

#### Charging

12V/5A

## NPS200



## NPS400



### NPS400 SPEC

#### Capacity

475WH(10.8V, 44AH)

#### Equivalent Capacity

132AH@3.6V

#### USB Output

5V/2.1A, 9V/2A, 12V/1.5A

#### PD Output

5V~20V/3A

#### 12V Vehicle Output

12V/10A

#### 220V AC Inverter Output (Sine Wave)

220V AC 50HZ, 1.5A(300W)

#### Charging

12V/5A



REVOLUTIONARY INTELLIGENT POCKET LIGHT

**TUP**  USB CHARGING

**1000 Lumens**

Runtime on lowest output level: 70h

Beam distance: 180m

Built-in Li-ion battery

CREE XP-L HD V6 LED

Rechargeable

Size: 2.77" x 1.16" x 1.03"  
(70.33mm x 29.5mm x 26.3mm)

W: 1.88oz (53.2g)



HI-TECH BLACK ●  
METALLIC GRAY ●



Battery Level & Voltage    Brightness Level



User Mode    Runtime Remaining

 **GOOD DESIGN**

 ISPO AWARD

 iF DESIGN AWARD 2017



MAGNETIC

**LA10 CRI**

**85 Lumens**

Runtime on lowest output level: 23h

Beam distance: 10m

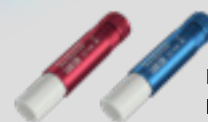
1 x AA Battery

Nichia 219B LED

TD: 0.89" (22.6mm)

L: 3.09" (78.5mm)

W: 1.51oz (42.7g)



■ LA10 CRI Ruby  
■ LA10 CRI Sapphire

More Colour Options

**TM28**

**6000 Lumens**

Runtime on lowest output level: 1000h

Beam distance: 655m

4 x IMR18650 Batteries

4 x 18650 Batteries

NBP68 HD Battery Pack

4 x CREE XHP35 HI LEDs

Rechargeable

HD: 2.68" (68mm)

TD: 1.97" (50mm)

L: 5.59" (142mm)

W: 14.6oz (414g)



DIE-CAST UNIBODY

**EC4GTS**

**1800 Lumens**

Runtime on lowest output level: 380h

Beam distance: 396m

2 x 18650 Batteries

CREE XHP35 HD LED

HD: 1.57" (40mm)

T: 1.57" x 1.14"  
(40mm x 29mm)

L: 6.1" (155mm)

W: 6.03oz (171g)



DIE-CAST UNIBODY

**EC4S**

**2150 Lumens**

Runtime on lowest output level: 325h

Beam distance: 280m

2 x 18650 Batteries

4 x CR123 Batteries

CREE XHP50 LED

HD: 1.57" (40mm)

T: 1.54" x 1.10"  
(39mm x 28mm)

L: 5.90" (150mm)

W: 6.03oz (171g)



WINNER



ISPO AWARD  
WINNER OF 2015/2016

**TINI**  USB CHARGING

**380 Lumens**

Runtime on lowest output level: 60h

Built-in Li-ion battery

CREE XP-G2 S3 LED

Beam distance: 64m

Size: 1.7" x 1" x 0.45"  
(43.3mm x 25.4mm x 11.5mm)

W: 0.47oz(13.4g) TINI Cu:0.76oz(21.5g)



TINI Cu

COPPER VERSION

Multiple Colors Available ● ● ● ● ● ● ●



**TIP CRI**

**240 Lumens**

Runtime on lowest output level: 46h

Built-in Li-ion battery

Nichia 219B LED

Beam distance: 56m

Size: 2.39" x 0.96" x 0.54"

W: 0.83oz (23.5g, with battery)

NITECORE®



## LR50

**250 Lumens**

Runtime on lowest output level: 100h

Beam distance: 24m

9 High CRI LEDs

Size: 119.8mm x 57mm x 30mm  
(4.72" x 2.24" x 1.18")

W: 110g ( 3.88oz )

Multiple Colors Available



Multiple Colors Available



## LR30

**205 Lumens**

Runtime on lowest output level: 62h

Beam distance: 40m

1 x 18650 Battery  
2 x CR123 Batteries

Size: 3.62" x 1.72" x 1.24"  
(92mm x 43.5mm x 31.6mm)

W: 2.18oz (62g)

OUTDOOR INDUSTRY ANNUAL AWARDS



## LR10

**250 Lumens**

Runtime on lowest output level: 38h

Beam diameter: 24m

Built-in Li-ion battery

9 high CRI LEDs

Size: 2.58" x 1.97" x 0.98"

W: 2.08oz (59.1g)



LR10 PANDA



## DL10

**1000 Lumens**

Runtime on lowest output level: 4h

Beam distance: 223m

CREE XP-L HI V3 LED

1 x 18650 Battery  
2 x CR123 Batteries

L: 5.24" (133.1mm)

HD: 1.34" (34mm)

TD: 1" (25.4mm)

W: 5.05oz (143.1g)

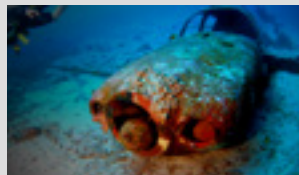


Photo with using DL10 for light supplement

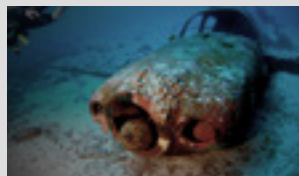


Photo without using light supplement

## BP25

MOLLE System Backpack



Winner of Small Backpacks of TACTICAL GEAR Magazin

## BP20 Multi-purpose Backpack



NTC10  
Tactical Bag



## NEB20

Tactical Bag



## NUP20

Utility Pouch



## NUP10

Utility Pouch



**NITECORE®**



[www.nitecore.com](http://www.nitecore.com)

All images, texts and statements specified herein this catalogue are for reference purpose only. Should any discrepancy occurs between this catalogue and information specified on [www.nitecore.com](http://www.nitecore.com), information on our official website shall prevail. SYSMAX Innovations Co.,Ltd. reserves the rights to interpret and amend the content of this document at any time without prior notice.

SYSMAX Innovations Co.,Ltd.  
Rm 2601-06, Central Tower, No.5 Xiancun Road, Tianhe District,  
Guangzhou, 510623, Guangdong, China  
Tel: +86 20 83862000 Fax: +86 20 83882723  
E-mail: [info@nitecore.com](mailto:info@nitecore.com)